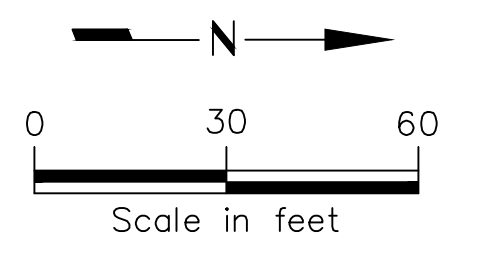
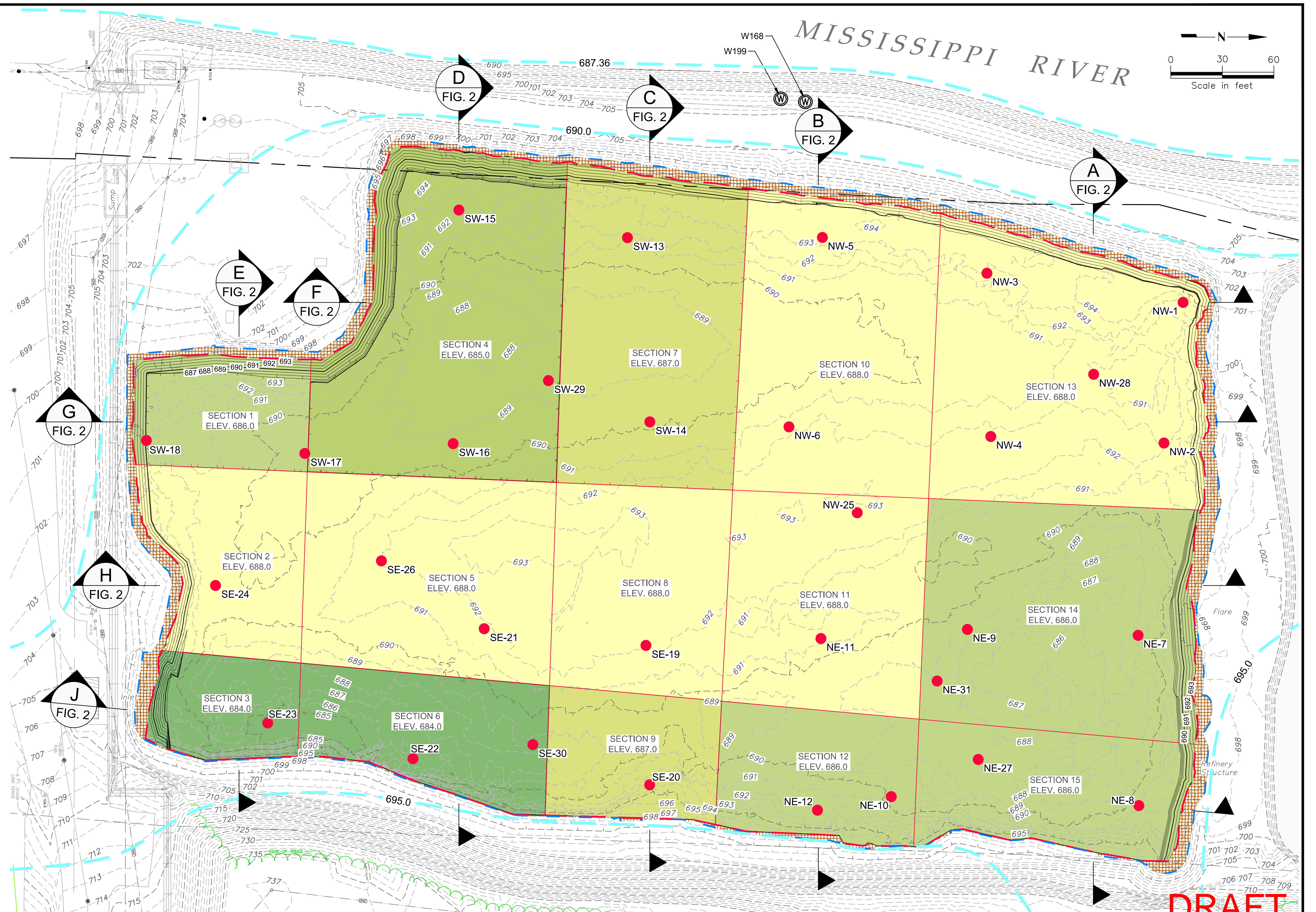


X:\14-115 - St. Paul Park Refinery\Drawings\NTE Lagoon 4\Bid Set\Lagoon 4_Bid_Set_Sludge_Excavation_Plan.dwg Jeff Yeary personal Plotted: Jul 15, 2015 - 10:34am



PLAN VIEW LEGEND:

- NE-27 SAMPLE POINT LOCATIONS
- ⊙ EXISTING MONITORING WELL
- - - 690 - - - EXISTING GROUND MAJOR (5') CONTOUR
- - - 692 - - - EXISTING GROUND MINOR (1') CONTOUR
- 690 — PROPOSED EXCAVATION (5') CONTOUR
- 692 — PROPOSED EXCAVATION (1') CONTOUR
- EXCAVATION SECTION DIVISIONS
- LIMITS OF LAGOON 4 EXCAVATION
- APPROX. LIMITS OF WATER SURFACE (ELEV. 697.0)
- 690.0 HISTORIC GROUNDWATER CONTOUR (SEPT. 2013)

EXCAVATION ELEVATIONS LEGEND:

- EXCAVATION TO ELEV. 688.0
- EXCAVATION TO ELEV. 687.0
- EXCAVATION TO ELEV. 686.0
- EXCAVATION TO ELEV. 685.0
- EXCAVATION TO ELEV. 684.0
- 1-FOOT BANK EXCAVATION

THIS DOCUMENT IS NOT PERMITTED TO BE COPIED OR DISTRIBUTED WITHOUT WRITTEN PERMISSION FROM AXIS GROUP INC.

DRAFT

NO.	BY	DATE:	REVISION

1101 WEST MINERAL AVENUE
SUITE 102
LITTLETON, COLORADO. 80120
(303) 332-5757

PROJ. NO.: 14-115	DATE: 07/09/2015	DRAWN BY: JAY	CHECKED BY: JWJB
-------------------	------------------	---------------	------------------

<p>ST. PAUL PARK REFINERY, ST. PAUL PARK, MINNESOTA</p> <p style="font-weight: bold; font-size: 18px;">LAGOON 4 EXCAVATION PLAN AND CROSS SECTION LOCATIONS</p>	<p>DRAWING NO.:</p> <p style="font-size: 36px; font-weight: bold;">1</p>
---	--